

# Office to let

## Isho Offices - III

Timișoara, 46C, Take Ionescu Boulevard, Timisoara



### Building information

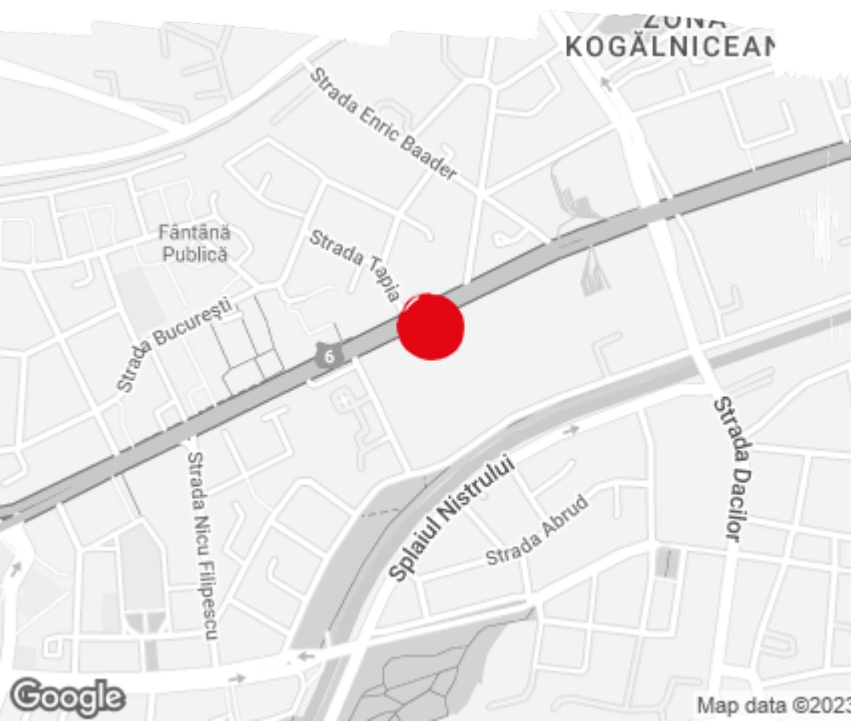
|                      |             |
|----------------------|-------------|
| Building status      | Existing    |
| Year of construction | 2020        |
| Parking ratio        | 1 / 38 sq m |
| Total building area  | 18 000 sq m |

### Commercial terms

|                    |               |
|--------------------|---------------|
| Office space*      | after login * |
| Parking            | after login * |
| Service charge*    | after login * |
| Minimum lease term | after login * |
| Availability       | after login * |

\* Asking terms for m<sup>2</sup>/month

### Location



### Available space

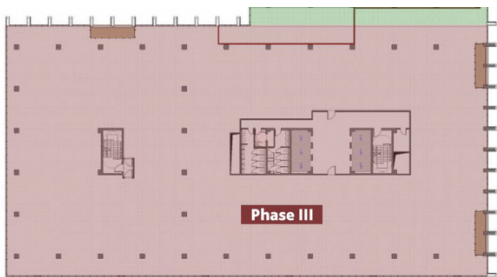
6 540 sq m

Available office space

1 240 sq m

Minimum office space

Typical floor plan



Available space

| Floor | Vacant space        | Availability        |
|-------|---------------------|---------------------|
| 0 *   | please contact us * | please contact us * |
| 1     | please contact us * | please contact us * |
| 2     | please contact us * | please contact us * |
| 5     | please contact us * | please contact us * |
| 7     | please contact us * | please contact us * |
| Total | after login *       |                     |

(\*) Retail space

Public transport

Bus: 46, 11, 17  
Tram: 1, 10

Contact

+40 21 302 3400  
More information